

**EGEE SITE**  
**ADMINISTRATION MADE**  
**EASY**

BRUNO OLIVEIRA, ANTÓNIO PINA, ALBERTO PROENÇA

EGE  
EGEE SITE

ADMINISTRATION MADE  
EASY

BRUNO OLIVEIRA, ANTÓNIO PINA, ALBERTO PROENÇA



- Each DAG
- RPM an
- Pre an
- Machi
- DAG is
- Defin
- Def
- Any r

Oliver

# EGEE ROLL

---

a (almost) fully automatic system for  
installation of EGEE sites

why?

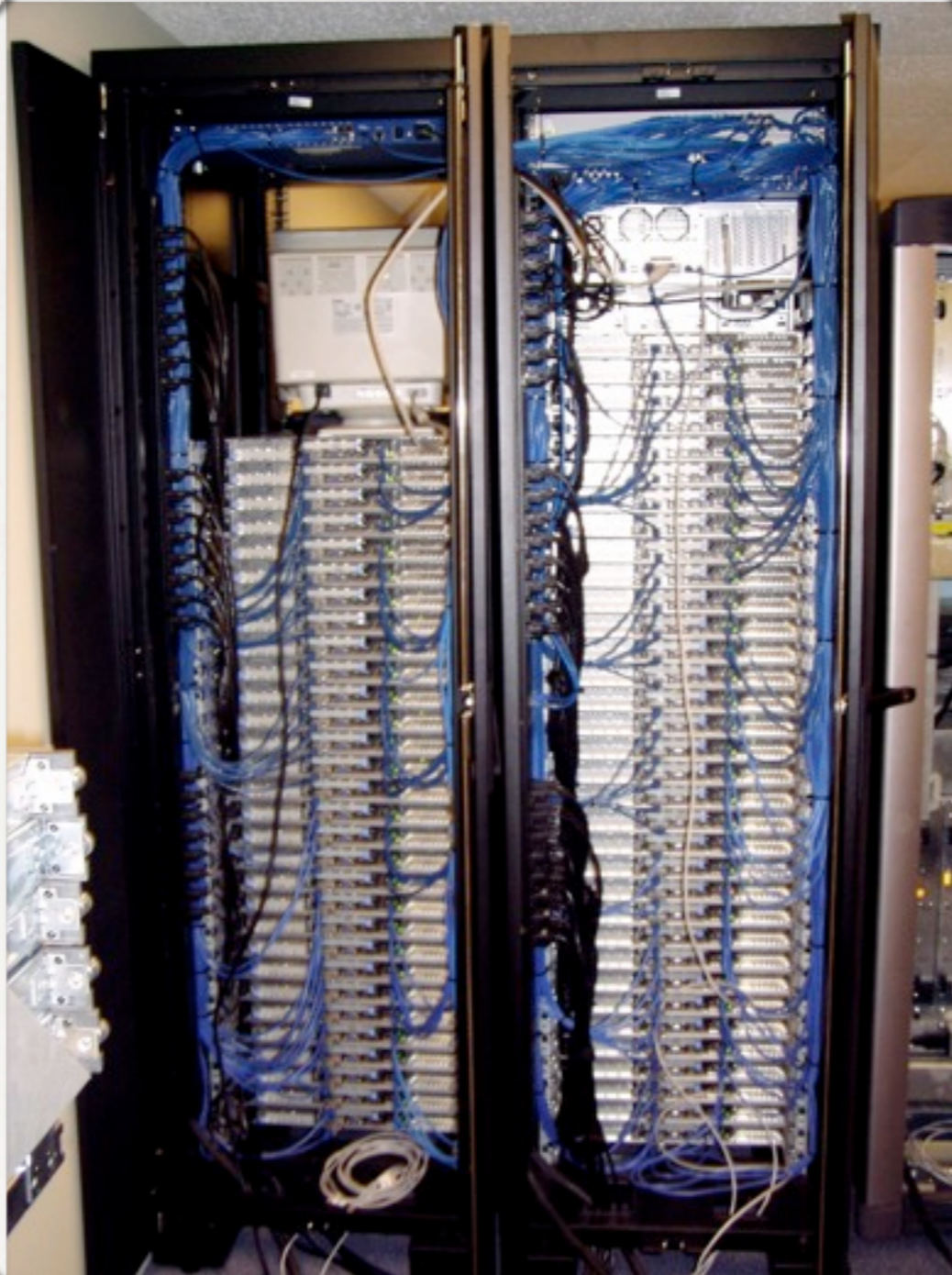
# EGEE

---

one simple recipe (for one serving)

# EGEE

---



# EGEE

---

computing element

storage element

bdi

mon box

worker nodes



# EGEE

---



# EGEE

```
LCG_REPOSITORY="rpm http://glitesoft.cern.ch/EGEE/gLite/APT/R3.0/ rhel30 externals Release3.0 updates"
CA_REPOSITORY="rpm http://linuxsoft.cern.ch/LCG-CAs/current production"
REPOSITORY_TYPE="yum"
INSTALL_ROOT="/opt"
OUTPUT_STORAGE="/tmp/jobOutput"
JAVA_LOCATION="/usr/java/default"
CRON_DIR="/etc/cron.d"
GLOBUS_TCP_PORT_RANGE="20000 25000"
MYSQL_PASSWORD="uminho1"
APEL_DB_PASSWORD="APELDB_PWD"
GRIDICE_SERVER_HOST=$MON_HOST
SITE_EMAIL=admin-uminho-cp@di.uminho.pt
SITE_CRON_EMAIL=$SITE_EMAIL
SITE_SUPPORT_EMAIL=$SITE_EMAIL
SITE_NAME=UMinho-CP
SITE_LOC="Braga, Portugal"
SITE_LAT=41.561213 # -90 to 90 degrees
SITE_LONG=-8.397510 # -180 to 180 degrees
SITE_WEB="http://www.di.uminho.pt/cp"
SITE_TIER="TIER 3"
SITE_SUPPORT_SITE="http://www.lip.pt"
SITE_HTTP_PROXY=""
SITE_BDII_HOST=ce.$MYDOMAIN
JOB_MANAGER=lcpbs
CE_BATCH_SYS=pbs
BATCH_BIN_DIR="/opt/torque/bin"
BATCH_VERSION=torque-2.1.9-4cri
BATCH_LOG_DIR="/opt/torque/server_priv/accounting"
CE_CPU_MODEL=XEON
CE_CPU_VENDOR=intel
CE_CPU_SPEED=2000
CE_LOGCPU=8
CE_PHYSCPU=2
CE_OS_ARCH=i386
CE_OS="ScientificCERNSLC"
CE_OS_RELEASE=4.6
CE_OS_VERSION="SLC"
-:--- site-info.def 12% (22,0) (Shell-script(bash))
```

# EGEE

Certificate:

Data:

Version: 1 (0x0)

Serial Number: 7829 (0x1e95)

Signature Algorithm: md5WithRSAEncryption

Issuer: C=ZA, ST=Western Cape, L=Cape Town, O=Thawte Consulting cc,  
OU=Certification Services Division,  
CN=Thawte Server CA/emailAddress=server-certs@thawte.com

Validity

Not Before: Jul 9 16:04:02 1998 GMT

Not After : Jul 9 16:04:02 1999 GMT

Subject: C=US, ST=Maryland, L=Pasadena, O=Brent Baccala,  
OU=FreeSoft, CN=www.freesoft.org/emailAddress=baccala@freesoft.org

Subject Public Key Info:

Public Key Algorithm: rsaEncryption

RSA Public Key: (1024 bit)

Modulus (1024 bit):

00:b4:31:98:0a:c4:bc:62:c1:88:aa:dc:b0:c8:bb:  
33:35:19:d5:0c:64:b9:3d:41:b2:96:fc:f3:31:e1:  
66:36:d0:8e:56:12:44:ba:75:eb:e8:1c:9c:5b:66:  
70:33:52:14:c9:ec:4f:91:51:70:39:de:53:85:17:  
16:94:6e:ee:f4:d5:6f:d5:ca:b3:47:5e:1b:0c:7b:  
c5:cc:2b:6b:c1:90:c3:16:31:0d:bf:7a:c7:47:77:  
8f:a0:21:c7:4c:d0:16:65:00:c1:0f:d7:b8:80:e3:  
d2:75:6b:c1:ea:9e:5c:5c:ea:7d:c1:a1:10:bc:b8:  
e8:35:1c:9e:27:52:7e:41:8f

Exponent: 65537 (0x10001)

Signature Algorithm: md5WithRSAEncryption

93:5f:8f:5f:c5:af:bf:0a:ab:a5:6d:fb:24:5f:b6:59:5d:9d:  
92:2e:4a:1b:8b:ac:7d:99:17:5d:cd:19:f6:ad:ef:63:2f:92:  
ab:2f:4b:cf:0a:13:90:ee:2c:0e:43:03:be:f6:ea:8e:9c:67:  
d0:a2:40:03:f7:ef:6a:15:09:79:a9:46:ed:b7:16:1b:41:72:  
0d:19:aa:ad:dd:9a:df:ab:97:50:65:f5:5e:85:a6:ef:19:d1:  
5a:de:9d:ea:63:cd:cb:cc:6d:5d:01:85:b5:6d:c8:f3:d9:f7:  
8f:0e:fc:ba:1f:34:e9:96:6e:6c:cf:f2:ef:9b:bf:de:b5:22:  
68:9f

**EGEE**

---



**YAIM**

# EGEE

The screenshot displays the GOCDB 3 web interface. The top navigation bar includes the GOCDB 3 logo on the left, the version number 'version 3.1.6' on the right, and a breadcrumb trail: 'GOCDB >> Site admin >> Site info'. Below the navigation bar, the main content area is titled 'Site info for UMinho-CP'. On the left side, there is a sidebar with an 'ACTIONS' menu containing various site management options such as 'Home', 'Downtime overview', 'Add new downtime', 'Browse sites', 'List sites by ROC', 'List sites in scope', 'Register a new site', 'Browse nodes', 'Request a role', 'Show security contacts', and 'Show Tier1 contacts'. Below the actions menu are sections for 'Users', 'Sites', and 'Nodes', each with a checkmark and a search input field. At the bottom of the sidebar is a 'Search GOCDB' button and a 'MY STATUS' section. The main content area features a 'Site information: UMinho-CP' section with a table of site details. Above the table are links for 'GSStat report for this site', 'Edit this site', 'Add node to this site', and 'Add downtime to this site'. The table lists various attributes including site name, official name, domain, home URL, contact email, contact tel, emergency email, emergency tel, helpdesk email, operating hours, time zone, GIIS URL, tier, primary site status, description, latitude, longitude, country, FWIP, and creation date.

version 3.1.6

GOCDB >> Site admin >> Site info

ACTIONS

- Home
- Downtime overview
- Add new downtime
- Browse sites
  - List sites by ROC
  - List sites in scope
  - Register a new site
- Browse nodes
- Request a role
- Show security contacts
- Show Tier1 contacts

Users

Sites

Nodes

Search GOCDB

Current Developments

Help

Contact Us

MY STATUS

Site info for UMinho-CP

Site information: UMinho-CP

[GSStat report for this site](#) (opens in new window)

[Edit this site](#)

[Add node to this site](#)

[Add downtime to this site](#)

Site name	UMinho-CP
Official name	University of Minho Civil Protection
Domain	cp.di.uminho.pt
Home URL	<a href="http://www.di.uminho.pt/cp">http://www.di.uminho.pt/cp</a>
Contact email	uminho-cp-admin@di.uminho.pt
Contact tel	+351253604440
Emergency email	
Emergency tel	+351253604440
Helpdesk email	
Operating hours	0900 - 1800 (GMT)
Time zone	Europe/Lisbon
GIIS URL	ldap://ce.cp.di.uminho.pt:2170/mds-vo-name=UMinho-CP,o=grid
Tier	3
Primary site?	Yes
Description	
Latitude	41
Longitude	-8
Country	Portugal
FWIP	193.136.19.0/255.255.255.0
Creation date	2008-04-09, 13:01:14 [UTC] 2008-04-09, 14:01:14 [In site timezone: Europe/Lisbon]

# EGEE

---

preparation time: 1 week

difficulty: 

why?

# ONE MORE EXCUSE

---

fast (and easy) installation by non-tech savvies, in a Civil Protection context



what is the EGEE roll?



# ROCKS

---

RHEL-based, cluster-oriented operating  
system

# ROCKS

---

grab the installation disk

install the *FrontEnd*

cluster nodes are installed from the  
*FrontEnd*

what *kind* of nodes will be installed?

*appliance*

# APPLIANCE

---

specifies the software and configuration  
of the cluster node

# APPLIANCE

---

specifies which *rolls* to install



what is a *roll*?

# ROLL

---

software and configuration *bundle*

# ROLL

---

RPM packages  
configuration files  
configuration scripts

FrontEnd is installed with a set of *rolls*  
(OS, HPC, Torque, ...)

~

*rolls* also define which *appliances* will be  
available

~

*appliances* define the kind of cluster node

*rolls* can be created by anyone

# EGEE ROLL

---

*appliances* for each element

provides *site-info.def*

installs gLite middleware

runs *yaim*

# EGEE (ROLL METHOD)

---

install FrontEnd with EGEE roll

~

provide site specific information  
(during installation)

~

provide certificates

~

install cluster nodes (through FrontEnd)

# EGEE (ROLL METHOD)

---

preparation time: 1 ~ 2 days

difficulty: 



but this only concerns installation...

administration

# EGEE SITE ADMINISTRATION

---

virtual organisations

updates to gLite

# VIRTUAL ORGANISATIONS

---

full reconfiguration is required

# VIRTUAL ORGANISATIONS

---

change *users.conf* and *groups.conf*

change *site-info.def*

create *vo* configuration files

copy these files to all nodes

run *yaim* (according to each element)

# GLITE UPDATES

---

may introduce changes to *site-info.def*

may require reconfiguration

# GLITE UPDATES

---

run *yum*

change *site-info.def*

copy this file to all nodes

run *yaim* (according to each element)

restart service(s)

lather,



rinse,

repeat...

wouldn't be nice if we could do this in a  
*single* command?

egeecli

# MAIN OBJECTIVE

---

site administration from the *FrontEnd's*  
command line

how to merge in a *single* command all the  
processes involved?

inspiration...

rocks



# ROCKS

---

provide a simple, unified user command  
for cluster administration

# ROCKS

---

rocks <**verb**> <object> <subject> <parameters>

syntax based in verbs

*e.g.: add, set, activate, list*

# ROCKS

---

rocks <verb> <**object**> <subject> <parameters>

verbs are applied to objects

*e.g.: host, network*

# ROCKS

---

rocks <verb> <object> <**subject**> <parameters>

subjects are properties of the object

*e.g.: interface, nas, tile*

# rocks list host interface *wn0-0*

SUBNET	IFACE	MAC	IP	NETMASK	GATEWAY	MODULE	NAME
private	eth0	00:0c:29:c0:d6:e5	10.255.255.252	255.0.0.0	-----	pcnet32	worker-node-0-0

# ROCKS

---

dynamically expandable *Python* API

new verbs, objects, subjects can be added

“Object-oriented programming is an exceptionally bad idea which could only have originated in California”

Edsger Dijkstra



what to manage?

site-info.def

virtual organisations

gLite middleware

three new *objects* created

siteinfo

vo

glite

which *verbs* would be useful?

# SITE-INFO.DEF

---

*variable = value*

e.g.: MY\_DOMAIN="cp.di.uminho.pt"

# **SITE-INFO.DEF**

---

*add, remove, set variables*

```
# egeecli add siteinfo variable  
INSTALL_ROOT "/opt"
```

```
# egeecli set siteinfo variable RBHOST  
"rb02.lip.pt"
```

# **SITE-INFO.DEF**

---

*dump* the file



```
# egeecli add siteinfo variable  
INSTALL_ROOT "/opt"
```

```
# egeecli set siteinfo variable RBHOST  
"rb02.lip.pt"
```

```
# egeecli dump siteinfo > site-info.def
```

# **SITE-INFO.DEF**

---

*sync* the file

```
# egeecli add siteinfo variable  
INSTALL_ROOT "/opt"
```

```
# egeecli set siteinfo variable RBHOST  
"rb02.lip.pt"
```

```
# egeecli dump siteinfo > site-info.def
```

```
# egeecli sync siteinfo
```

# **SITE-INFO.DEF**

---

*restore* a previous file

# SITE-INFO.DEF

---

Six *verbs* can be used

add/remove

set

dump

sync

restore

# VIRTUAL ORGANISATIONS

---

*add, remove* virtual organisations

```
# egeekli add vo iber.vo.ibergrid.eu 100  
10 10
```

# VIRTUAL ORGANISATIONS

---

*disable/enable* virtual organisation



what about variables specific to virtual  
organisations?

# VIRTUAL ORGANISATIONS

---

*add, remove* and *set* variables for virtual  
organisations

```
# egeekli add vo variable swetest VOMSCADN  
"/DC=es/DC=irisgrid /CN=IRISGridCA"
```

```
# egeekli sync siteinfo
```

```
site-info.def
```

```
users.conf
```

```
vo.d/*
```

gLite

# GLITE

---

each element corresponds to a number of  
meta-packages

*e.g.: Computing Element: glite-TORQUE\_server,  
lcg-CE*

# GLITE

---

*add, remove* meta-packages

version

release date

may require reconfiguration



```
# egeekli add glite lcg-CE yes 3.1.35-0  
20090831
```

# GLITE

---

*add, remove* associations between physical machines and meta-packages

```
# egeecli add glite machine ce lcg-CE
```

```
# egeecli add glite machine ce glite-  
TORQUE_server
```



image used under Creative Commons from mrpunto

# GLITE

---

*sync* the site

# egeekli **sync** glite

new configuration files generated

~

copy to all nodes

~

*yum* executed

~

*yaim* executed (according to configuration)

where to get this?



EGEE roll

database comes pre-loaded with *all*  
information used to install the site

how this was done

```

class Command(rocks.commands.VirtualOrganisationArgumentProcessor,
              rocks.commands.add.command):
    def run(self, params, args):
        if len(args) != 1:
            self.abort('must supply one virtual organisation')
        vo_name = args[0]

        if vo_name in self.getVirtualOrganisationNames():
            self.abort('virtual organisation "%s" exists' % app_name)

        (numberOfUsers, numberOfSGMUsers, numberOfPRDUsers, isActive) = \
            self.fillParams(
                [('number-of-users', '100'),
                 ('number-of-sgm-users', '1'),
                 ('number-of-prd-users', '1'),
                 ('is-active', 'N')])

        isActive = self.bool2str(self.str2bool(isActive))
        rows = self.db.execute ("select buid from VirtualOrganisations order by idVO desc limit 1")

        if rows == 1:
            (buid,) = self.db.fetchall()[0]
        else:
            buid = 0

        self.db.execute ("insert into VirtualOrganisations
            (voName, numberOfUsers, numberOfSGMUsers, numberOfPRDUsers, isActive, buid)
            values ('%s', '%s', '%s', '%s', '%s', '%d')" %
            (vo_name, numberOfUsers, numberOfSGMUsers, numberOfPRDUsers, isActive, buid + 1000))

```

supporting database

secure shell

411 service

what now?

support for *groups.conf*

gLite 3.2

EGI/NGI

decide what to do with the extra time

questions?



thank you